

# PRODUCT OVERVIEW



# FPS 4400



## 4" SUBMERSIBLE PUMPS

### FPS 4400 Pumps

**0.5HP - 7.5HP, Flow rate 0.4 m<sup>3</sup>/h - 6.0 m<sup>3</sup>/h**

### Tri-Seal™ Floating Stage System

US Patent No. 7,290,984

#### 4400 Tri-Seal

The standard FPS 4400 4" submersible pump features the new Tri-Seal floating stage system. This new stage system further improves efficiency and protects against wear when pumping abrasives like sand. All FPS 4400 pumps are unconditionally guaranteed against sand locking for one full year.

#### 4400 Tri-Seal Pumps

18 LPM Tri-Seal  
25 LPM Tri-Seal  
30 LPM Tri-Seal  
45 LPM Tri-Seal  
60 LPM Tri-Seal  
70 LPM Tri-Seal



#### Seal 1

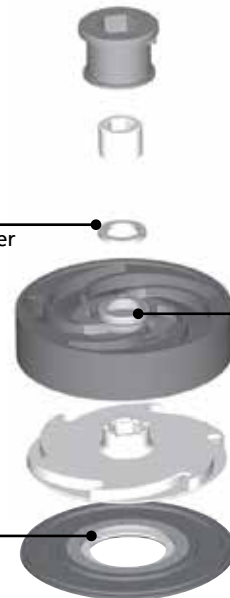
Phenolic washer provides axial sealing as impeller floats in the stage.

#### Seal 2

Stainless steel hub seal is captured but not stationary, floating with the impeller for maximum sealing.

#### Seal 3

Stainless steel impeller eye seal.



# FPS 4400



## HIGH CAPACITY PUMPS

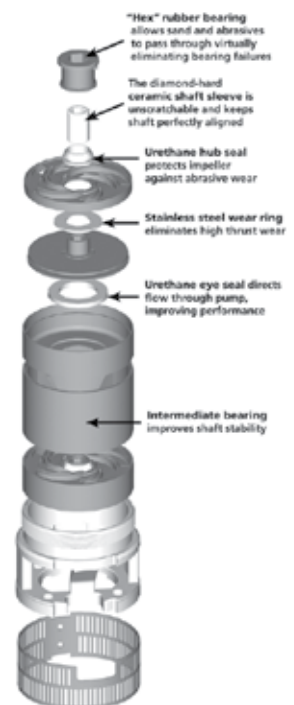
### FPS 4400 Pumps

**4" - 0.75HP - 7.5HP, Flow rate 6 m<sup>3</sup>/h - 16 m<sup>3</sup>/h**

#### 4400 Hi-Cap

The FPS 4400 High Capacity pump is engineered for commercial, irrigation and residential use. Design advancements reduce efficiency losses caused by internal pump leakage and abrasives. All FPS 4400 pumps are unconditionally guaranteed against sand locking for one full year.

Type	Flow Rate	
FPS HC 100	6 m <sup>3</sup> /h	100 LPM
FPS HC 150	9 m <sup>3</sup> /h	150 LPM
FPS HC 200	12 m <sup>3</sup> /h	200 LPM
FPS HC 270	16 m <sup>3</sup> /h	270 LPM





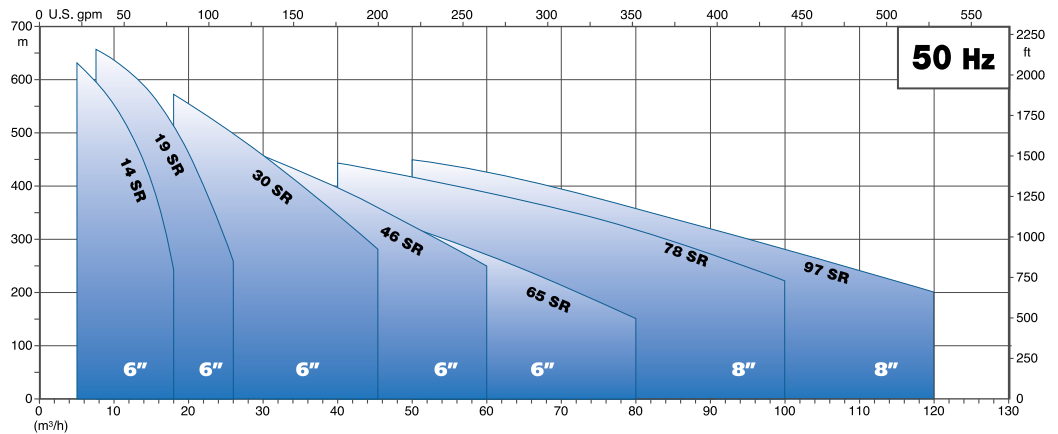
# 6"- 8" STAINLESS STEEL SUBMERSIBLE PUMPS

5HP - 150HP, Flow rate 6 m<sup>3</sup>/h - 120 m<sup>3</sup>/h



The FPS SR Series water pumps were designed specifically for municipal and industrial applications where high grade stainless steel is required. These pumps contain stainless steel impellers, a thick solid stainless steel shell to maintain alignment and heavy investment

cast suction and discharge brackets. Designed to operate efficiently with Franklin Electric submersible motors, the FPS SR Series all stainless steel pump is equipped to handle the most demanding conditions.



SSI SERIES

# 10" STAINLESS STEEL SUBMERSIBLE PUMPS

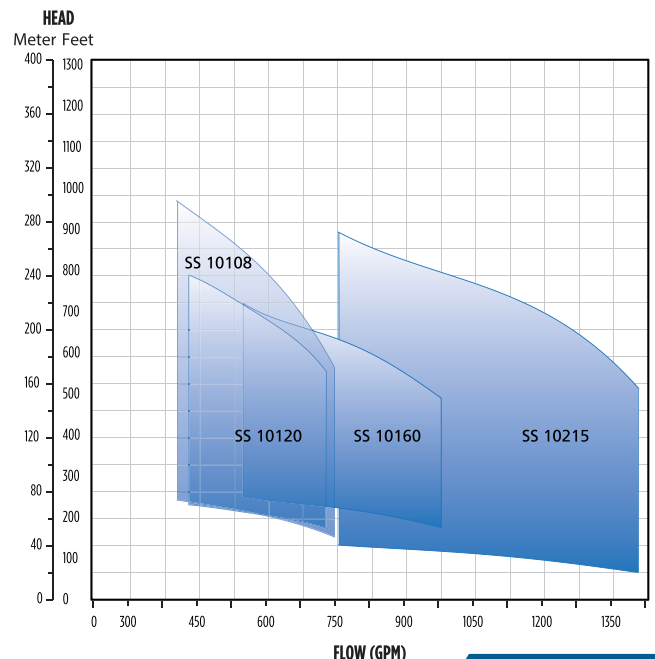
10HP - 250HP, Flow rate 82 m<sup>3</sup>/h - 260 m<sup>3</sup>/h



## Features

- Stainless steel impellers and diffusers
- High quality die cut for the most demanding applicaitons
- Mixed flow impellers
- NEMA Standard connection
- 1200 mm minimum liquid level (NPSH) from bottom of suction grid
- 50 g/m<sup>3</sup> maximum allowable solid quantity

108SSI: 82 - 138 m<sup>3</sup>/h  
 120SSI: 84 - 150 m<sup>3</sup>/h  
 160SSI: 120 - 195 m<sup>3</sup>/h  
 215SSI: 150 - 260 m<sup>3</sup>/h





## 316 STAINLESS STEEL SUBMERSIBLE TURBINE PUMPS

**20HP - 540HP, Flow rate up to 1000 m<sup>3</sup>/h**



The FS Series pumps have been engineered in all AISI 316 stainless steel for efficient and reliable pumping of liquids in marine, residential, municipal, industrial and agricultural applications.

### Flow Rate:

- 6" : up to 96 m<sup>3</sup>/h
- 8" : 100 and 130 m<sup>3</sup>/h
- 10" : 180 and 200 m<sup>3</sup>/h
- 12" : 260, 300 and 400 m<sup>3</sup>/h
- 14" : 180 and 310 m<sup>3</sup>/h
- 16" : 240 and 1000 m<sup>3</sup>/h.

### Features:

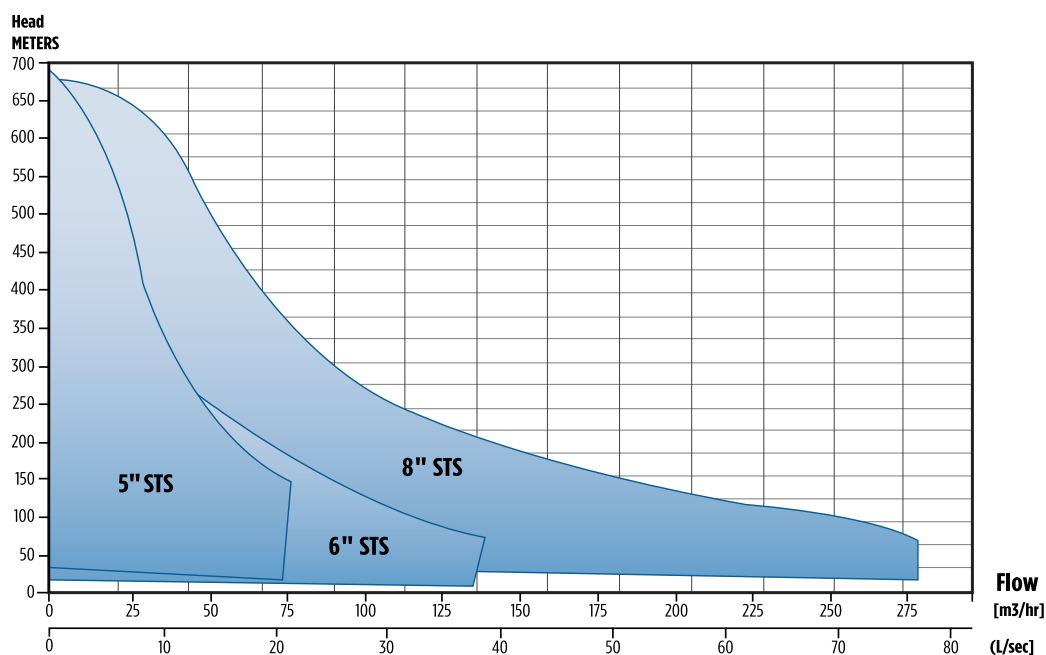
- 100% factory tested
- Stainless Steel AISI 316 discharge and suction bracket
- Stainless Steel AISI 316 bowls
- 8", 10" and 12" sizes
- Stainless steel impellers and diffusers
- Impellers locked onto shaft with keys
- Rubber bearing
- Integrated Non Return valve on all models
- Stainless Steel 329 duplex pump shaft for increased durability
- All pumps suit Franklin Electric motors
- Flanges and BSPP discharges
- Maximum running time at zero delivery in 2 minutes



## STS SERIES

## CAST IRON SUBMERSIBLE TURBINE PUMPS

**5HP - 200HP, Flow rate 19 m<sup>3</sup>/h - 190 m<sup>3</sup>/h**

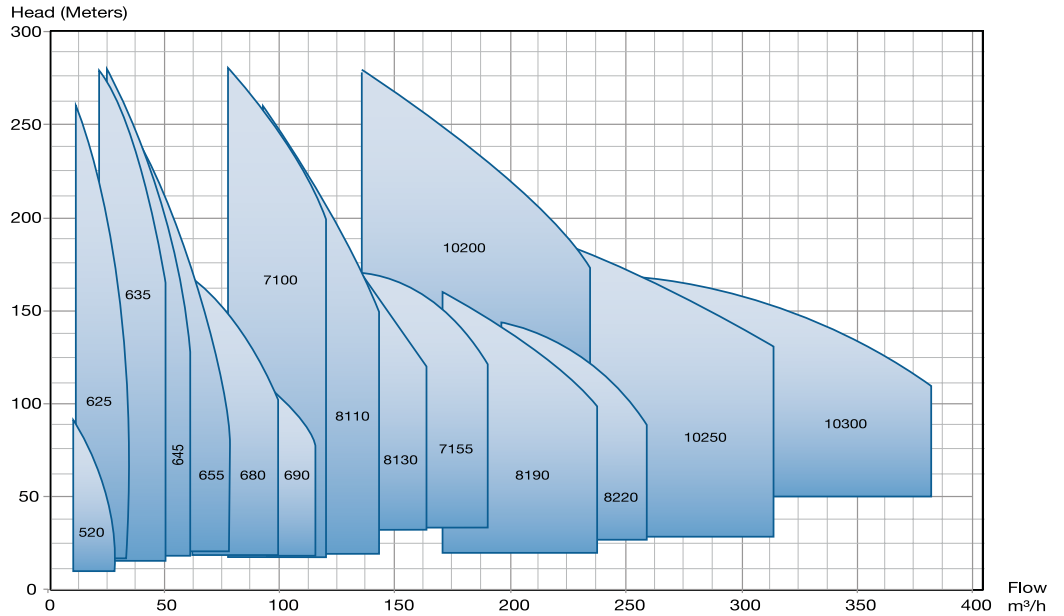






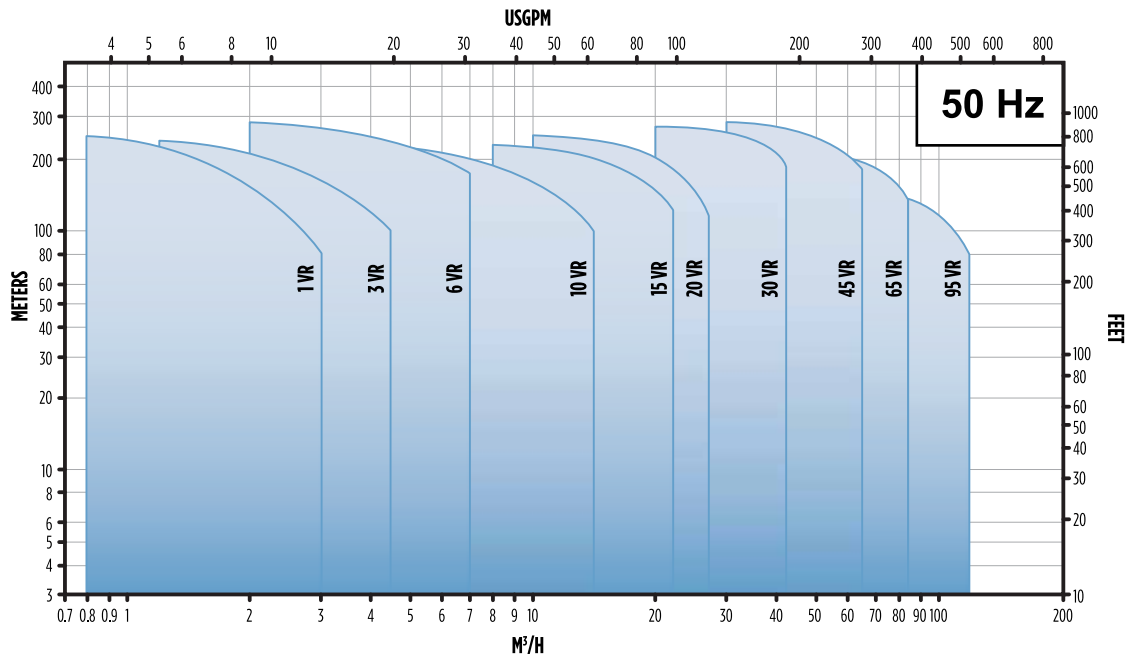
# CAST IRON SUBMERSIBLE TURBINE PUMPS

2HP - 250HP, Flow rate 20 m³/h - 300 m³/h



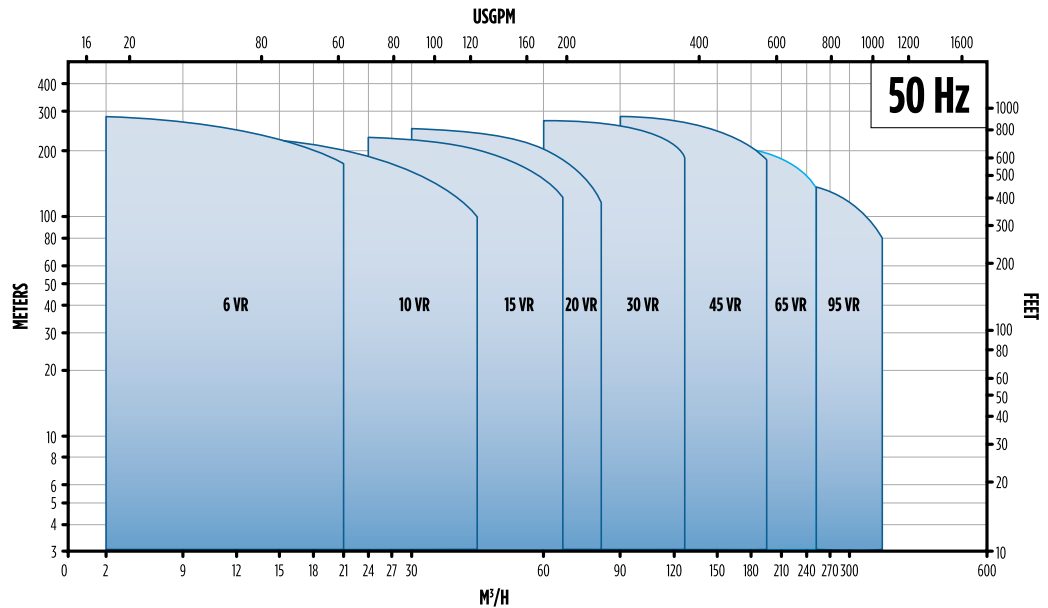
# STAINLESS STEEL VERTICAL MULTI-STAGE PUMPS

1.5HP - 60HP, Flow rate up to 120 m³/h



# PACKAGE BOOSTER PUMP

Up to 3 x 45kW, Flow rate 3 m³/h - 330 m³/h



## Applications

- Residence
- Water Supply System
- Irrigation System
- Industrial Plant
- Commercial Building

## Features and benefit

- 2-3 pumps in cascade
- Head max. 240 Meter
- Liquid Temp. -15°C to 120°C
- Plug and pump solution
- Automatically operation
- Simple and robust design
- Easy to service and maintain
- Perfect constant pressure
- High Efficiency



## Variable Frequency Drive DRIVE-TECH



The installation of a Drive-Tech allows the user to gain important benefits like:

- Reduced energy consumption with remarkable cost saving
- Longer life of pumping system
- Variable speed at constant pressure drive

Drive-Tech controls are uniquely compact, and plugged with most of the pumps available in the market they can ensure steady operation conditions in terms of pressure, flow and temperature.

Drive-Tech delivers motor protection and monitoring, such as:

- overload and dry running protection
- integrated soft start and soft stop functions, extending the life of the system and reducing peak variation
- input current and supply voltage
- recording running hours and login errors and alarms reported by the system

- controlling a second or third pump at constant speed DOL (DOL: Direct On Line)
- connecting to other Drive-Tech to get combined operation
- controlling a second or third pump at constant speed. (3 pumps at single cost)
- minimum and maximum pressure alarm
- minimum motor frequency setting
- Voltage / frequency programmable curve
- settable carrier frequency 2,5 to 12 kHz
- constant flow or constant temperature modes available
- 4 - 20 mA or 0 - 10 V DC input settable
- RS485 comm for data logger
- signal output for motor run, alarm, DOL1 pump signal, DOL2 pump signal

Drive-Tech enclosure is entirely made of die-cast aluminum and is very sturdy, lightweight, easy to cool down and very compact in size.



# SUBDRIVE INLINE 1100

## CONSTANT PRESSURE SYSTEM



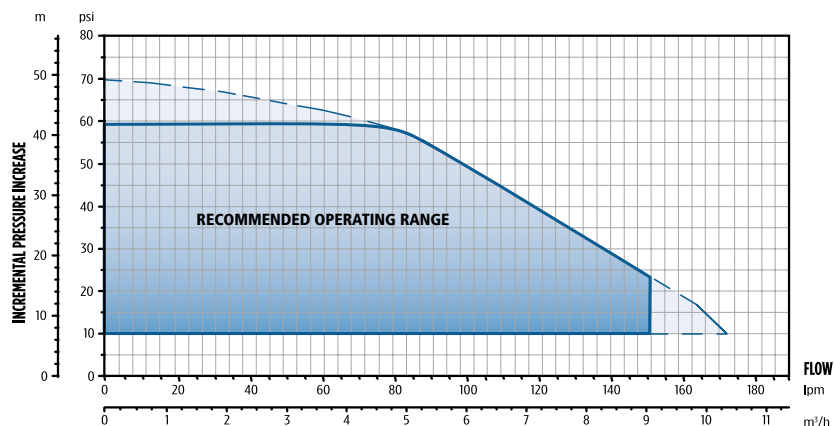
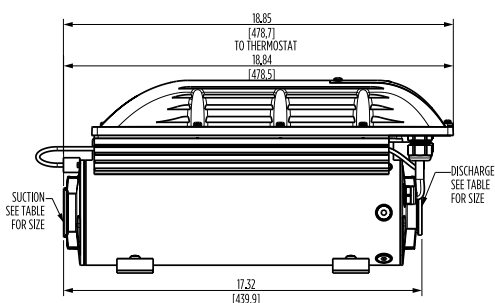
Franklin Electric's SubDrive Inline 1100 provides constant pressure for both private wells and municipal/city water systems.

The Inline 1100 provides a constant pressure solution for homes with low yielding wells, where storage tanks or cisterns are used.

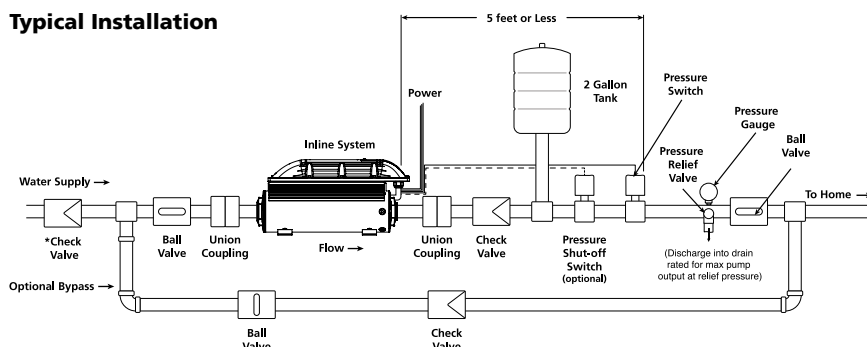
The Inline 1100 is versatile and makes quick work of booster pump installation, often needed in a sprinkler system. The NEMA 4 electronics enclosure ensures a watertight seal.

### Applications

- Boosted and constant water pressure from water storage/cistern systems
- Homes (in both private and municipal applications)
- General pressure boosting
- Sprinkler systems
- Farming and commercial wash down systems



### Typical Installation



### Features

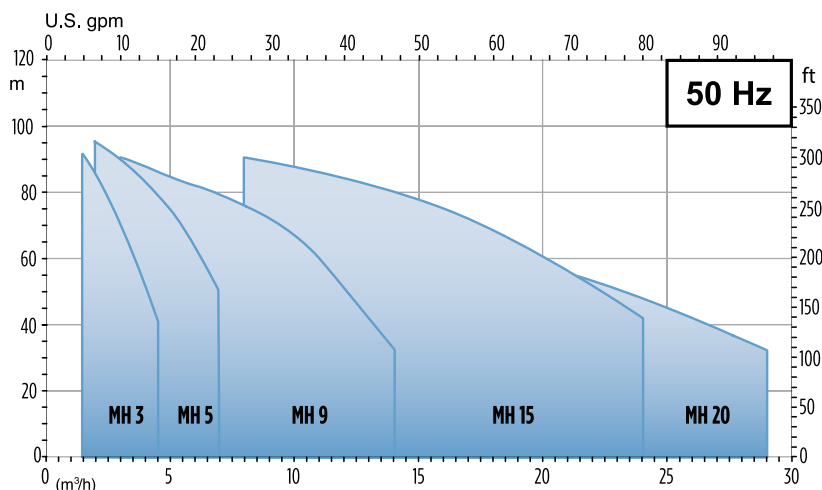
- Pump, motor, drive, and pressure switch in one box as a packaged system
- Small and compact design fits into small areas, even between floor joists
- Stainless steel construction for years of operation
- Simple and easy installation with step-by-step illustrated instructions
- Integrated motor design allows water to flow around it for quiet and cool operation
- NEMA 4 (IP56) electronics enclosure
- Multiple mounting configurations allow for the unit to be installed where you need it, whether horizontal, vertical, or even upside down
- Built-in system protections guard the Inline unit from many common failure modes including surge protection, voltage underload, locked pump, open circuit, short circuit, and overheated controller.
- Product power rating: 1.2 hp, 0.9 kW
- Shipping weight: 50 lbs, 22.7 kg



## HORIZONTAL MULTI-STAGE PUMPS

**0.45HP - 7.5HP, Flow rate up to 28 m<sup>3</sup>/h**

The new MH Series, multi-stage booster pump is designed to meet your pressure boosting needs. The stainless steel construction offers high performance in wide variety of applications.



**EGN-EGT/F  
SERIES**

## SUBMERSIBLE DRAINAGE PUMPS

**0.6HP - 2HP, Flow rate up to 36 m<sup>3</sup>/h**

### EGN Series

- For clean containing solids up to 10 mm grain size
- For draining rooms or emptying tanks
- Extraction of water from ponds, streams or pits and for rainwater collection
- Liquid temperature up to 35°C
- Maximum immersion depth: 5 m
- Minimum immersion depth: 205 mm
- Continuous duty (with submerged motor)

### EGT & EGF Series

- For domestic or industrial waste water, dirty water with solids up to 50 mm grain size, for liquids which are compatible with the pump materials
- For draining rooms or emptying tanks
- Extraction of water from ponds, streams or pits and for rainwater collection
- Liquid temperature up to 35°C
- Maximum immersion depth: 5 m
- Minimum immersion depth: 275 mm
- Continuous duty (with submerged motor)



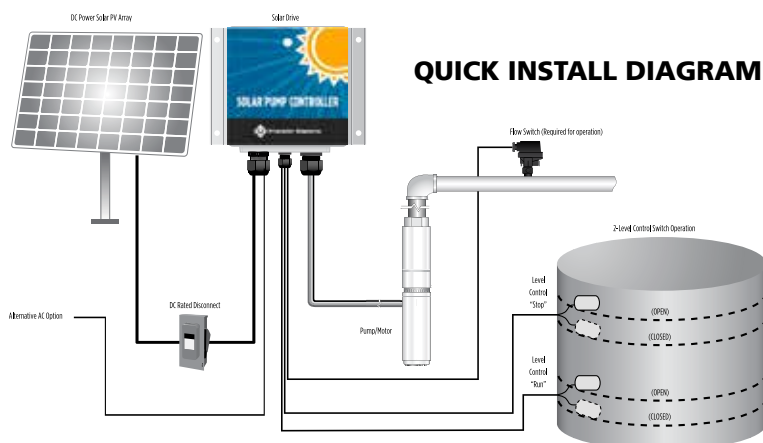




# SOLAR PUMPING SYSTEM

Flow rate up to 90 m<sup>3</sup>/h

- 4" or 6" Franklin Electric submersible motor
- 4", 6" or 8" Franklin Electric submersible pump
- Solar controller
- Flow switch (not included but mandatory to be installed with package)
- Variety of flow rates available: up to 90 m<sup>3</sup>/hr
- Motor and drive ratings available: 0.37kW to 22kW (0.55HP to 30HP)



## SOLAR CONTROLLER

Three-Phase, 0.75HP - 30HP, 400V Output

### Features

- It's an automatic design functions based on the DC input voltage from the solar modules.
- Customised to operate in dual power mode, Solar/Grid supply.
- Complete motor protections in both the modes against supply faults.
- Modular design of the power circuits for simpler maintenance routines.
- Support standard communication protocols (Modbus, Profibus, Device Net, TCP/IP etc.)
- All components are equipped in a powder coated sheet steel enclosures with proper cooling arrangements.

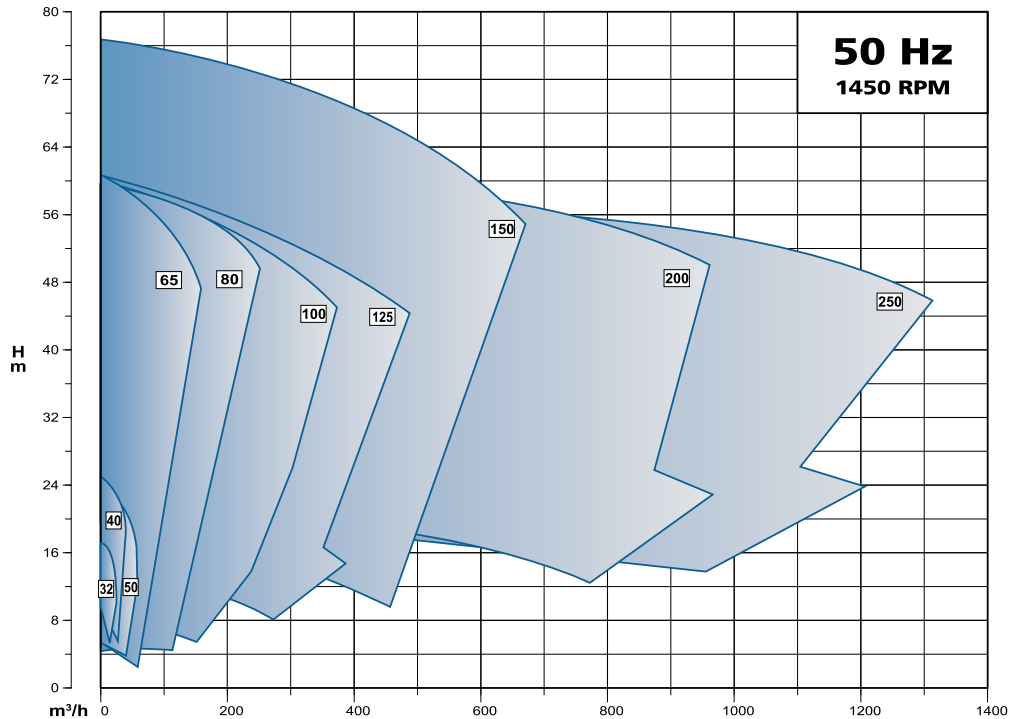


Description	Motor KW Rating	Motor FLC	Required VFD Rating Kw	VFD FLC
<b>Solar Pump Controller</b> Fully Automatic Control Panel with On Off selector Switch, ABB or Siemens Make inverter, output chokes operating distance 120m without voltage drop, Changeover switch for solar / EB functioning, short circuit protections in a powder coated sheet steel enclosure with lock & Key	0.5	2.3 A	0.75	5 A
	0.75	2.8 A	1	5 A
	1	3.8 A	1.5	10 A
	1.5	4.6 A	2	10 A
	2	7.0 A	3	13 A
	3	9.0 A	4	13 A
	4	10.3 A	5.5	13 A
	5.5	14.0 A	7.5	18 A
	7.5	18.5 A	10	23 A
	11	25.0 A	15	31 A
	15	33.0 A	20	38 A
	18.5	42.5 A	25	44 A
	22	50.3 A	30	53 A



# High Efficiency End Suction Pumps

Flow rate up to 1300 m<sup>3</sup>/h



## SUBMONITOR

## THREE-PHASE MOTOR PROTECTION



With Franklin Electric's SubMonitor, you can protect against adverse conditions such as low-flow wells, pump damage, clogging, bound pumps and power mishaps. SubMonitor is designed to protect three-phase motor and pump systems with ratings between 3 and 200 hp.

**Input Voltage:** 190 – 600 VAC

**Frequency:** 60/50 Hz

**Motor Service Factor Amps:** 5 to 350 Amps

**Maximum Conductor Size Through Sensors**

Max Diameter: 0.920 in. (23 mm)

**Trip Response**

Motor Under/Overload, Under/Overvoltage,  
Overheat, Unbalance: 3 seconds

**Control Circuit Rating:** 1.5 Amp AC, up to 600 volts

**Signal Circuit Rating:** 1 Amp AC, up to 250 volts (Incandescent  
lamp: 100 watts max)

**Wiring Terminals**

Wire Gauge: #12 to #18 AWG

Tighten to: 4.5 in-lbs

**Weight (SubMonitor):** 3.3 lbs/1.5 kg

**Carton Size (Std. Unit):** 7.75 in x 11.5 in x 6.75 in  
(19.7 cm x 29.2 cm x 17.1 cm)

**Shipping Weight (Std. Unit):** 3.5 lbs/1.5 kg

**Agency Approval:** UL 508 Listed

# 4" SUBMERSIBLE MOTOR

Single-Phase 2 Wires & 3 Wires 0.5HP - 5HP, Three-Phase 0.5HP - 10HP

## 4" Super Stainless Water Well - 1 Phase (With Lead)

Model	Description	KW	HP	Phase	Volts	Hz
21455592045	3W, 1/2, 220, 50 W	0.37	1/2	1	220	50
21455792045	3W, 3/4, 220, 50, W	0.55	3/4	1	220	50
21455892035	3W, 1, 220, 50, W	0.75	1	1	220	50
22435092035	3W, 1.5, 220, 50, W	1.1	1.5	1	220	50
22435192045	3W, 2, 220, 50, W	1.5	2	1	220	50
2243522604	4C1F (3HP,220,50,W) 900lb	2.2	3	1	220	50
2243528602	4C1F (3HP,220,50,W)	2.2	3	1	220	50
2243538602	4C1F (5HP,220,50,W)	3.7	5	1	220	50

Note: Franklin Electric control box required.

## 4" Super Stainless Water Well - 3 Phase (With Lead)

Model	Description	KW	HP	Phase	Volts	Hz
23456194045	3P, 1/2, 380, 50 W	0.37	1/2	3	380-415	50
23456294045	3P, 3/4, 380, 50, W	0.55	3/4	3	380-415	50
23456394035	3P, 1, 380/425, 50, W	0.75	1	3	380-415	50
23452494035	3P, 1.5, 460/380, 6/5, W	1.1	1.5	3	460/380	60/50
23432594045	3P, 2, 460/380, 6/5, W	1.5	2	3	460/380	60/50

## 4" High Thrust - 3 Phase (With Lead)

Model	Description	KW	HP	Phase	Volts	Hz
2343262604	4C3F (3HP,460/380,6/5,W) 900lb	2.2	3	3	460/380	60/50
2343268602	4C3F (3HP,460/380,6/5,W)	2.2	3	3	460/380	60/50
2343958602	4C3F (4HP,380/415,50,W)	3	4	3	380	50
2343278602	4C3F (5HP,460/380,60/50,W)	3.7	5	3	460/380	60/50
2343978602	HT, 3P, 5.5, 380, 50, W	4	5.5	3	380	50
2343288602	4C3F (7.5HP,460/380,60/50,W)	5.5	7.5	3	460/380	60/50
2345958602	4C3F (10,460/380,60/50,W)	7.5	10	3	460/380	60/50

## 4" Sandfighter - 3 Phase (With Lead)

Model	Description	KW	HP	Phase	Volts	Hz
2343268802	4C3F (3HP,460/380,6/5,SF)	2.2	3	3	460/380	60/50
2343278802	4C3F (5HP,460/380,6/5,SF)	3.7	5	3	460/380	60/50
2343288802	4C3F (7HP,460/380,6/5,SF)	5.5	7.5	3	460/380	60/50
2345958802	4C3F (10,460/380,60/50,SF)	7.5	10	3	460/380	60/50

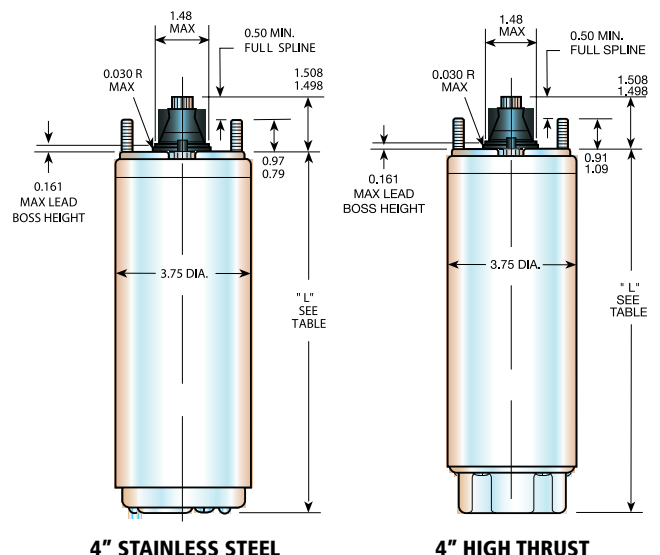
### APPLICATION DATA:

These motors are built for dependable operation in 4" diameter or larger water wells. Continuous rating in 86°F (30°C) water.

For further information, refer to Franklin Electric's Submersible Motor: Application, Installation, Maintenance Manual.

### SPECIAL FEATURES:

- **316 Stainless Steel:** Special construction option for acid, low pH, and saline applications.
- **Oil Stripper:** Special construction option for secondary oil recovery wells, geothermal or other applications with high ambient temperatures. Consult factory for details.
- **World Wide Adaptability:** All standard voltage and Hertz ratings are offered. Contact Franklin Electric for availability.



# 6" SUBMERSIBLE MOTOR

Three-Phase 0.5HP - 60HP, 460/380V, 60/50Hz, DOL / Star Delta

## 6" Water Well - 3 Phase

Model	Description	KW	HP	Phase	Volts	Hz
2366109020	6C3F (5HP,460/380,6/5,W)	3.7	5	3	460/380	60/ 50
2366119020	6C3F (7HP,460/380,6/5,W)	5.5	7.5	3	460/380	60/50
2366129020	6C3F (10HP,460/380,6/5,W)	7.5	10	3	460/380	60/50
2366139020	6C3F (15HP,460/380,6/5,W)	11	15	3	460/380	60/50
2366149020	6C3F (20HP,460/380,6/5,W)	15	20	3	460/380	60/50
2366159020	6C3F (25HP,460/380,6/5,W)	18.5	25	3	460/380	60/50
2366169020	6C3F (30HP,460/380,6/5,W)	22	30	3	460/380	60/50
2366179025	6C3F (40HP,460/380-415,6/5,W)	30	40	3	460/380	60/50
2366188125	6C3F (50HP,460/380,6/5,W) SF	37	50	3	460/380	60/50
2366198125	6C3F (60HP,460/380,6/5,W) SF	45	60	3	460/380	60/50

## 6" Sand Fighter - 3 Phase

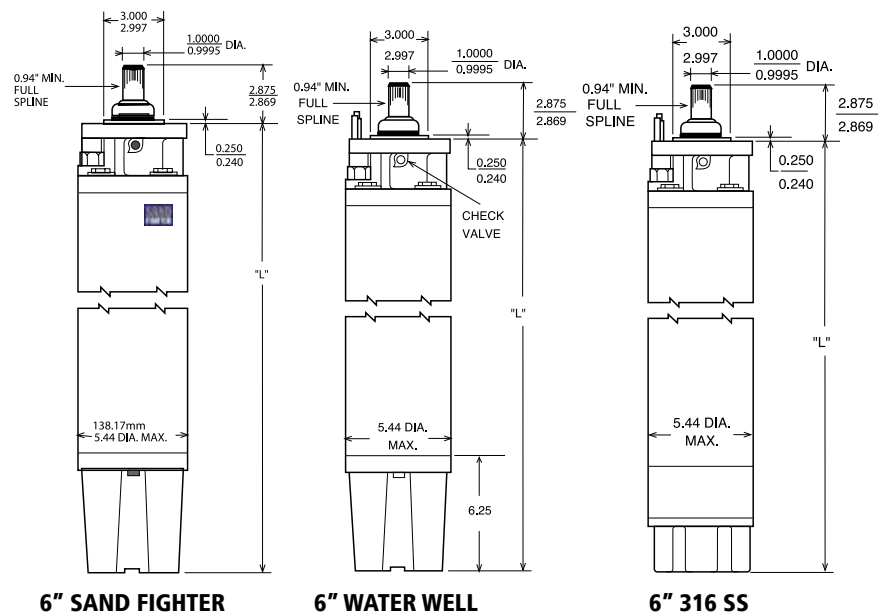
Model	Description	KW	HP	Phase	Volts	Hz
2366108120	6C3F (5HP,460/380,6/5,W) SF	3.7	5	3	460/380	60/50
2366118120	6C3F (7HP,460/380,6/5,W) SF	5.5	7.5	3	460/380	60/50
2366128120	6C3F (10HP,460/380,6/5,W) SF	7.5	10	3	460/380	60/50
2366138120	6C3F (15HP,460/380,6/5,W) SF	11	15	3	460/380	60/50
2366148120	6C3F (20HP,460/380,6/5,W) SF	15	20	3	460/380	60/50
2366158120	6C3F (25HP,460/380,6/5,W) SF	18.5	25	3	460/380	60/50
2366168120	6C3F (30HP,460/380,6/5,W) SF	22	30	3	460/380	60/50
2366178125	6C3F (40HP,460/380,6/5,W) SF	30	40	3	460/380	60/50
2366188125	6C3F (50HP,460/380,6/5,W) SF	37	50	3	460/380	60/50
2366198125	6C3F (60HP,460/380,6/5,W) SF	45	60	3	460/380	60/50

## APPLICATION DATA:

These motors are built for dependable operation in 6" diameter or larger water wells. Temperature and time ratings are continuous in 86°F (30°C) water at 1/2ft/ sec. flow past the motor. Rotation single-phase, CCW facing shaft end; three-phase, electically reversible.

## SPECIAL FEATURES:

- **316 Stainless Steel:** Special construction option for acid, low pH, and sea water application. All 316 SS motors include a Subtrol-Plus heat sensor.
- **Sand Fighter™** models available for sandy wells. All Sand Fighter models include Subtrol-Plus heat sensor.



# 8" SUBMERSIBLE MOTOR

Three-Phase 40HP - 200HP, 460/380V, 60/50Hz, DOL / Star Delta

## 8" Water Well - 3 Phase

Model	Description	KW	HP	Phase	Volts	Hz
2396006021	8C3F (40HP,460/380,6/5,W)	30	40	3	460/380	60/50
2396016021	8C3F (50HP,460/380,6/5,W)	37	50	3	460/380	60/50
2396026021	8C3F (60HP,460/380,6/5,W)	45	60	3	460/380	60/50
2396036021	8C3F (75HP,460/380,6/5,W)	55	75	3	460/380	60/50
2396046021	8C3F (100HP,460/380,6/5,W)	75	100	3	460/380	60/50
2396056004	8C3F (125HP,460/380,6/5,W)	100	125	3	460/380	60/50
2396066004	8C3F (150HP,460/380,6/5,W) SF	110	150	3	460/380	60/50
2396076004	8C3F (175HP,460/380,6/5,W) SF	130	175	3	460/380	60/50
2396086004	8C3F (200HP,460/380,6/5,W) SF	150	200	3	460/380	60/50

## 8" 316 SS - 3 Phase

Model	Description	KW	HP	Phase	Volts	Hz
2396006221	8C3F (40HP,460/380,6/5,S)	30	40	3	460/380	60/50
2396016221	8C3F (50HP,460/380,6/5,S)	37	50	3	460/380	60/50
2396026221	8C3F (60HP,460/380,6/5,S)	45	60	3	460/380	60/50
2396036221	8C3F (75HP,460/380,6/5,S)	55	75	3	460/380	60/50
2396046221	8C3F (100HP,460/380,6/5,S)	75	100	3	460/380	60/50
2391056204	8C3F (125HP,460/380,6/5,S)	93	125	3	460/380	60/50
2391066204	8C3F (150HP,460/380,6/5,S)	110	150	3	460/380	60/50
2391076204	8C3F (175HP,460/380,6/5,S)	130	175	3	460/380	60/50
2391086204	8C3F (200HP,460/380,6/5,S)	150	200	3	460/380	60/50

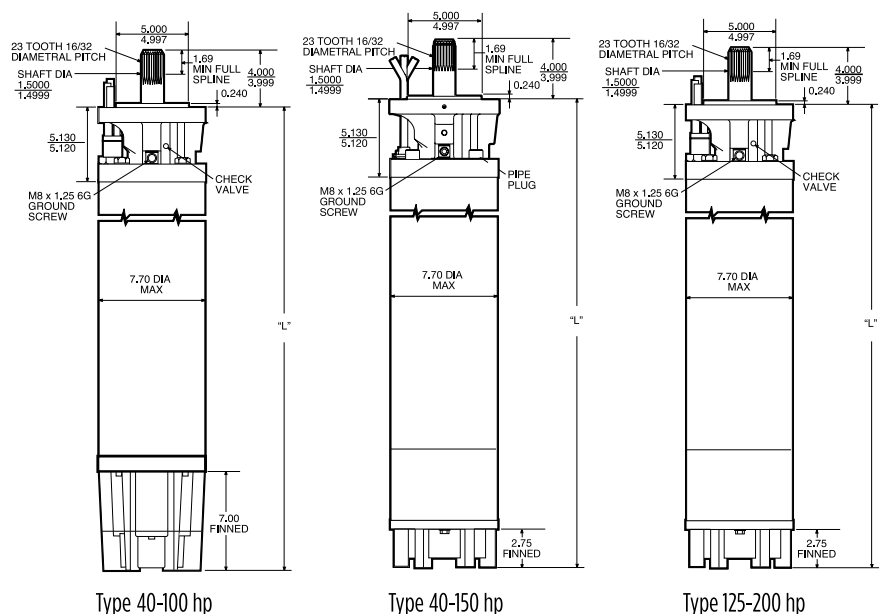
### OPTIONS:

- 6-Lead (Y-D) Design
- 316 Stainless Steel designs
- Sand Fighter™ shaft seal standard on 150-200 HP and is an available option on 40-125 HP. All 316SS motors have Sand Fighter™ shaft seal as standard
- Non-vertical application design available
- Other voltage and Hz design points available.

**Franklin's exclusive Submonitor™ overload protection options extends motor warranty to 3 years\***

This contractor friendly premium motor protection system protects the motor against overload, underload, overheating and rapid cycling.

\*Contact Factory for warranty details





## 4" COVERCO REWINDABLE SUBMERSIBLE MOTOR

**Single-Phase 0.5HP - 5.5HP, 210 - 230V, 50/60Hz**

Model	Description	KW	HP	Phase	Volts	Hz
NBS4 050 M	4C1F (0.5HP,210-230,50/60)	0.37	0.50	1	210-230	50/60
NBS4 075 M	4C1F (0.75HP,210-230,50/60)	0.55	0.75	1	210-230	50/60
NBS4 100 M	4C1F (1HP,210-230,50/60)	0.75	1.00	1	210-230	50/60
NBS4 150 M	4C1F (1.5HP,210-230,50/60)	1.10	1.50	1	210-230	50/60
NBS4 200 M	4C1F (2HP,210-230,50/60)	1.50	2.00	1	210-230	50/60
NBS4 300 M	4C1F (3HP,210-230,50/60)	2.20	3.00	1	210-230	50/60
NBS4K 400 M	4C1F (4HP,210-230,50/60)	3.00	4.00	1	210-230	50/60
NBS4K 500 M	4C1F (5HP,210-230,50/60)	3.70	5.00	1	210-230	50/60
NBS4K 550 M	4C1F (5.5HP,210-230,50/60)	4.00	5.50	1	210-230	50/60

**Three-Phase 0.5HP - 10HP, 380 - 415V, 50Hz**

Model	Description	KW	HP	Phase	Volts	Hz
NBS4 050 T	4C3F (0.5HP,380/415,50/60)	0.37	0.50	3	380/415	50/60
NBS4 075 T	4C3F (0.75HP,380/415,50/60)	0.55	0.75	3	380/415	50/60
NBS4 100 T	4C3F (1HP,380/415,50/60)	0.75	1.00	3	380/415	50/60
NBS4 150 T	4C3F (1.5HP,380/415,50/60)	1.10	1.50	3	380/415	50/60
NBS4 200 T	4C3F (2HP,380/415,50/60)	1.50	2.00	3	380/415	50/60
NBS4 300 T	4C3F (3HP,380/415,50/60)	2.20	3.00	3	380/415	50/60
NBS4 400 T	4C3F (4HP,380/415,50/60)	3.00	4.00	3	380/415	50/60
NBS4 550 T	4C3F (5.5HP,380/415,50/60)	4.00	5.50	3	380/415	50/60
NBS4 750 T	4C3F (7.5HP,380/415,50/60)	5.50	7.50	3	380/415	50/60
NBS4K 1000 T	4C3F (10HP,380/415,50/60)	7.50	10.0	3	380/415	50/60

### Dimension Single-Phase

Model	Tot. A (mm)	Tot. C (mm)	Weight (kg)	Oil (kg)
NBS4 050 M	364	402	8.1	0.71
NBS4 075 M	389	427	9.2	0.72
NBS4 100 M	411	449	10.3	0.76
NBS4 150 M	434	472	11.4	0.79
NBS4 200 M	467	505	12.8	0.76
NBS4 300 M	565	603	17.4	0.86
NBS4K 300 M	565	603	17.4	0.84
NBS4K 400 M	680	718	24.1	0.90
NBS4K 500 M	680	718	24.1	0.86
NBS4K 550 M	680	718	24.1	0.93

### Dimension Three-Phase

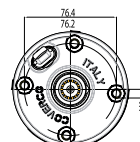
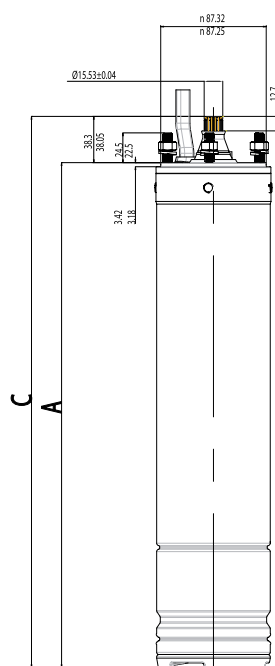
Model	Tot. A (mm)	Tot. C (mm)	Weight (kg)	Oil (kg)
NBS4 050 T	350	388	7.4	0.70
NBS4 075 T	364	402	8.0	0.71
NBS4 100 T	384	422	8.8	0.72
NBS4 150 T	411	449	10.6	0.70
NBS4 200 T	428	466	10.8	0.74
NBS4 300 T	467	505	12.5	0.78
NBS4 400 T	522	560	15.0	0.80
NBS4 550 T	587	625	18.3	0.82
NBS4 750 T	687	725	24.3	0.86
NBS4K 300 T	467	505	12.5	0.78
NBS4K 400 T	522	560	15.0	0.80
NBS4K 550 T	587	625	18.3	0.82
NBS4K 750 T	687	725	24.3	0.86
NBS4K 1000 T	768	806	28.3	1.09

The 4" submersible motors of the NBS4 series are the latest addition to the Coverco family. These are rewindable motors and can operate in wells with water not over 35 °C and a pH ranging between 6.5 e 8.0. The filling liquid is a dielectric fluid, known as white oil, approved by the FDA and other international pharmacological institutes.

The submersible motors are mainly used in vertical installations. However, these motors can be installed also horizontally prior confirmation from our technical department and global assessment of the required application. The rewindable feature is ensured by a design that allows the motors to be disassembled and reassembled.

**PRODUCT ADVANTAGES:**

- stator in oil
- cable material compliant with drinking water standards (with relative inspection)
- sand protection and mechanical seal to allow for optimal operation even in the presence of sand in the well
- excellent efficiency and low operating costs
- all motors are pre-filled with liquid and 100% tested



# 6" COVERCO REWINDABLE SUBMERSIBLE MOTOR

## Three-Phase 5.5HP - 40HP, 380 - 415V, 50Hz

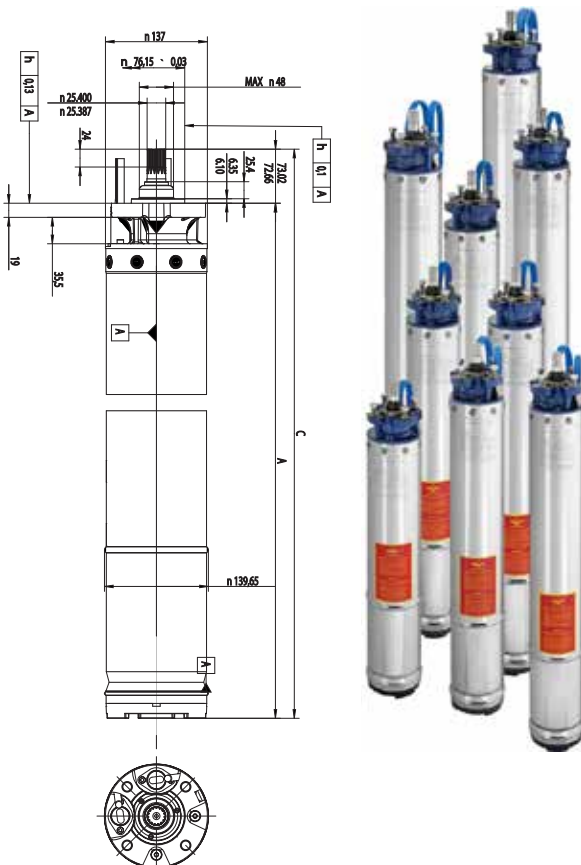
Model	Description	KW	HP	Phase	Volts	Hz
NBS6 550 T	6C3F (5.5HP,380/415,50)	4.0	5.5	3	380/415	50
NBS6 750 T	6C3F (7.5HP,380/415,50)	5.5	7.5	3	380/415	50
NBS6 1000 T	6C3F (10HP,380/415,50)	7.5	10	3	380/415	50
NBS6 1250 T	6C3F (12.5HP,380/415,50)	9.2	12.5	3	380/415	50
NBS6 1500 T	6C3F (15HP,380/415,50)	11	15	3	380/415	50
NBS6 2000 T	6C3F (20HP,380/415,50)	15	20	3	380/415	50
NBS6 2500 T	6C3F (25HP,380/415,50)	18.5	25	3	380/415	50
NBS6 3000 T	6C3F (30HP,380/415,50)	22	30	3	380/415	50
NBS6 4000 T	6C3F (40HP,380/415,50)	30	40	3	380/415	50

## Three-Phase 5.5HP - 40HP, 220 - 380V, 60Hz

Model	Description	KW	HP	Phase	Volts	Hz
NBS6 550 T	6C3F (5.5HP,220-380,60)	4.0	5.5	3	220/380	60
NBS6 750 T	6C3F (7.5HP,220-380,60)	5.5	7.5	3	220/380	60
NBS6 1000 T	6C3F (10HP,220-380,60)	7.5	10	3	220/380	60
NBS6 1250 T	6C3F (12.5HP,220-380,60)	9.2	12.5	3	220/380	60
NBS6 1500 T	6C3F (15HP,220-380,60)	11	15	3	220/380	60
NBS6 2000 T	6C3F (20HP,220-380,60)	15	20	3	220/380	60
NBS6 2500 T	6C3F (25HP,220-380,60)	18.5	25	3	220/380	60
NBS6 3000 T	6C3F (30HP,220-380,60)	22	30	3	220/380	60
NBS6 4000 T	6C3F (40HP,220-380,60)	30	40	3	220/380	60

## Dimension

Model	Tot. A (mm)	Weight (kg)	Oil (kg)
NBS6 550 T	633	34	2.50
NBS6 750 T	677	36	2.95
NBS6 1000 T	698	39	3.15
NBS6 1250 T	731	42	3.25
NBS6 1500 T	826	50	3.30
NBS6 2000 T	894	57	3.50
NBS6 2500 T	959	65	3.60
NBS6 3000 T	1116	78	3.80
NBS6 4000 T	1243	91	4.10



The 6" submersible motors of the NBS6 series are rewindable motors and can operate in wells with water not over 35°C and a pH ranging between 6.5 e 8.0. The filling liquid is a dielectric fluid, known as white oil, approved by the FDA and other international pharmacological institutes.

The submersible motors are mainly used in vertical installations. However, these motors can be installed also horizontally prior confirmation from our technical department and global assessment of the required application. The rewindable feature is ensured by a design that allows the motors to be disassembled and reassembled.

## PRODUCT ADVANTAGES:

- stator in oil
- cable material compliant with drinking water standards (with relative inspection)
- sand protection and mechanical seal to allow for optimal operation even in the presence of sand in the well
- excellent efficiency and low operating costs
- all motors are pre-filled with liquid and 100% tested



Franklin Electric, a global leader in ground water pumping and water pressure solutions, is pleased to announce the re-launch of Coverco submersible product. Coverco is the leading global manufacturer of oil lubricated submersible 4" motors and associated controls. Coverco is a part of the Franklin Electric Group of Companies. Coverco 4" Oil lubricated submersible motors and controls have been supplied into Australia as the premium oil lubricated motor for over 15 years and have been installed extensively over that time. Previously offered to distributors, Coverco is now available direct to FE dealers. Coverco products offer you a lower cost product to compete against other oil lubricated motors. The Coverco 4" oil lubricated motors and controls are priced very competitively for you and available ex stock.

